

REBUILD BY DESIGN

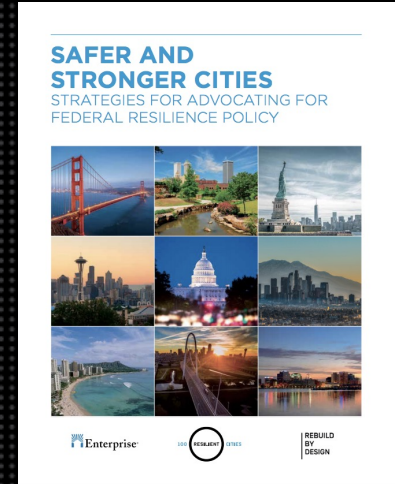


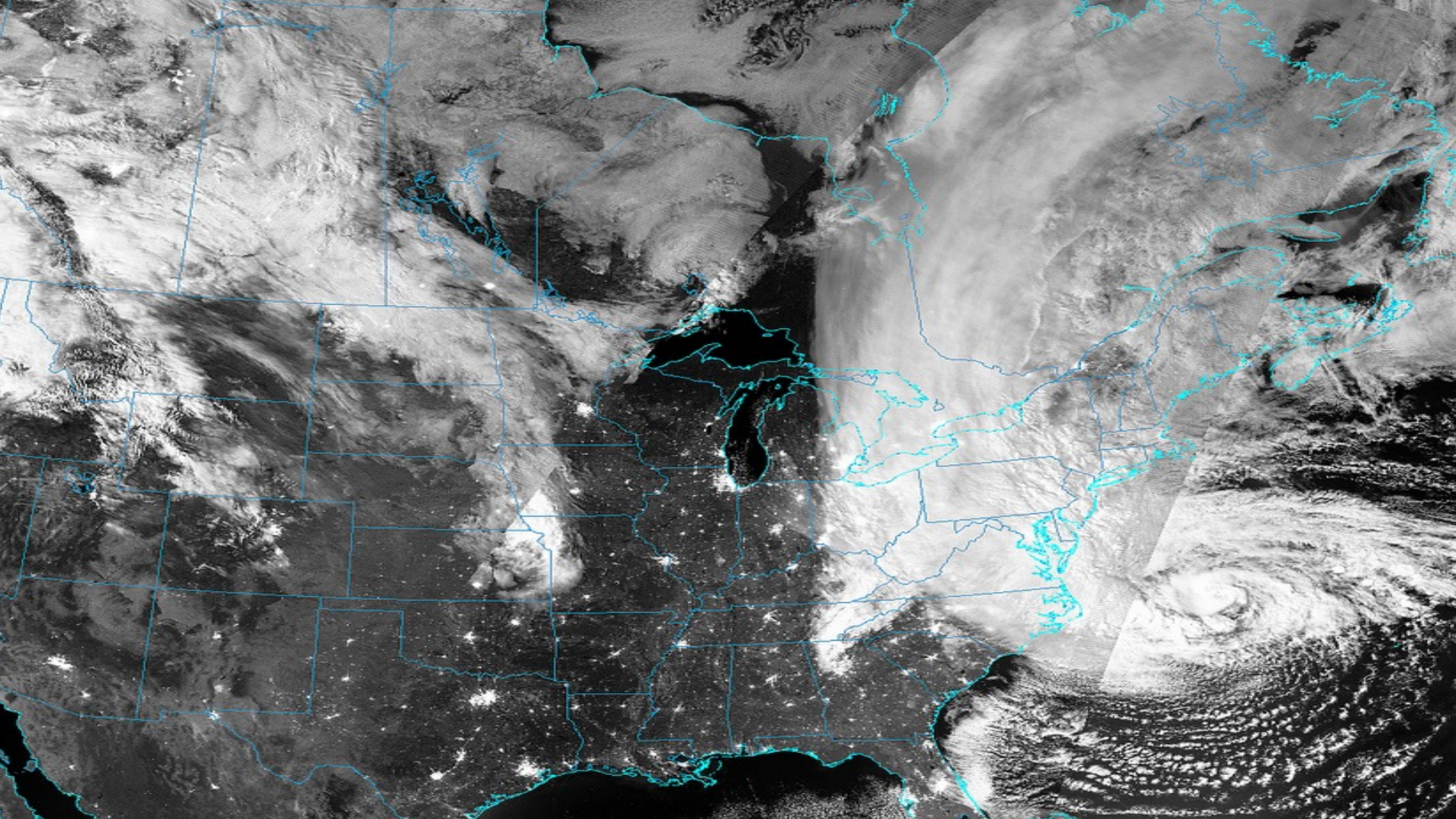
WHAT WE DO

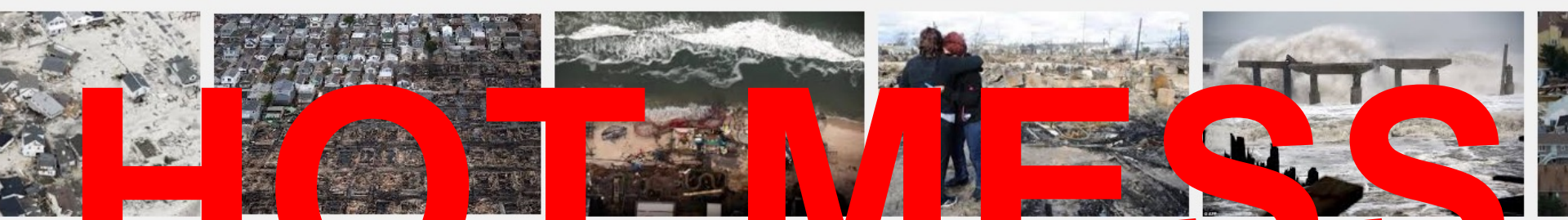
1 Large Scale Regional Design Competitions

2 Innovative Processes to Address Cities' Challenges

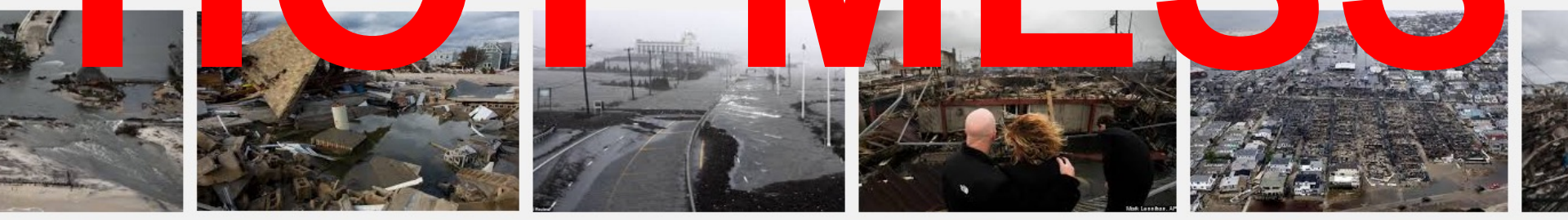
3 Research and Policy





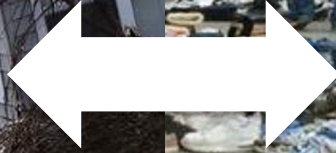


HOT MESS



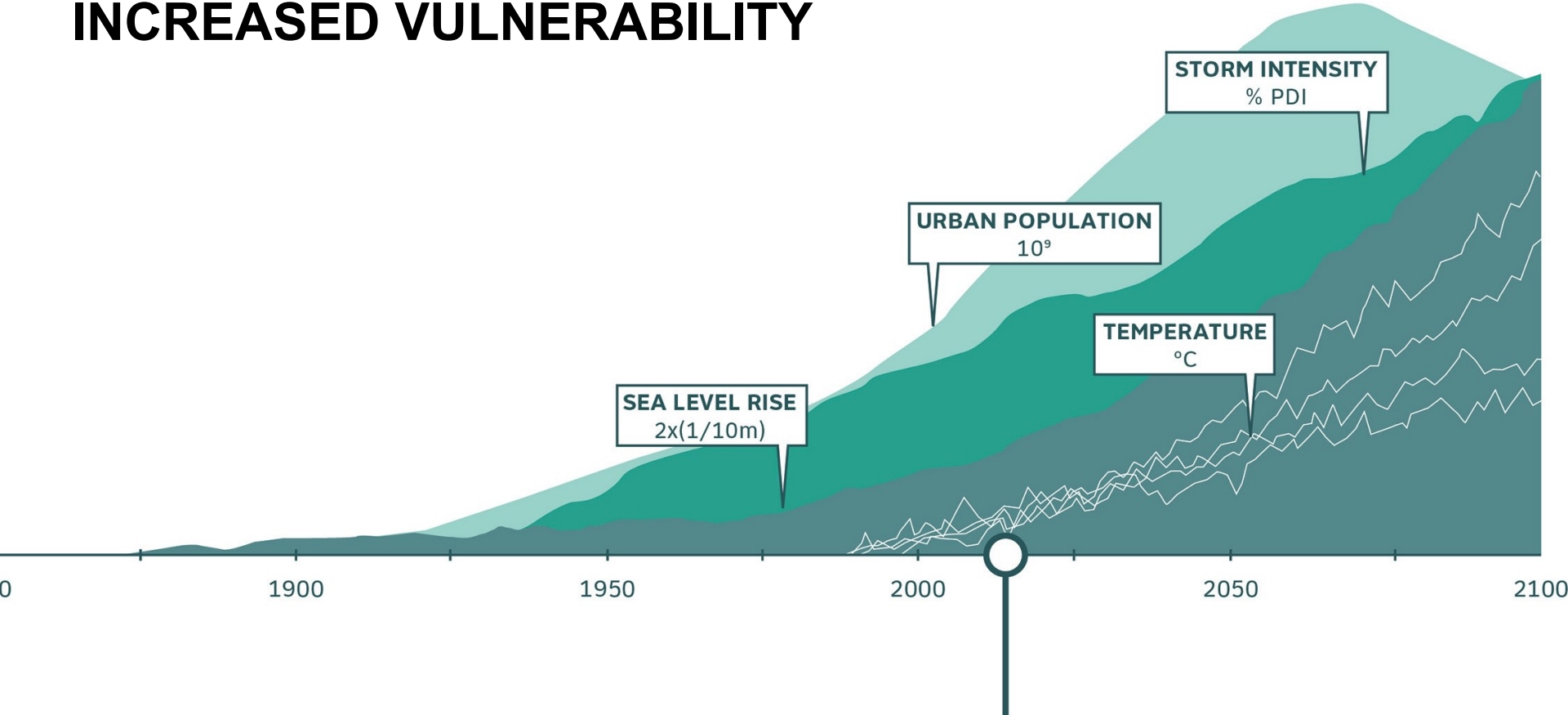


PHYSICAL



SOCIAL

INCREASED VULNERABILITY



SEA LEVEL RISE
2x(1/10m)

URBAN POPULATION
10⁹

TEMPERATURE
°C

STORM INTENSITY
% PDI

YOU ARE HERE

TYPICAL DESIGN PROCESS

Site

Budget

Program

Square Footage

Timeline

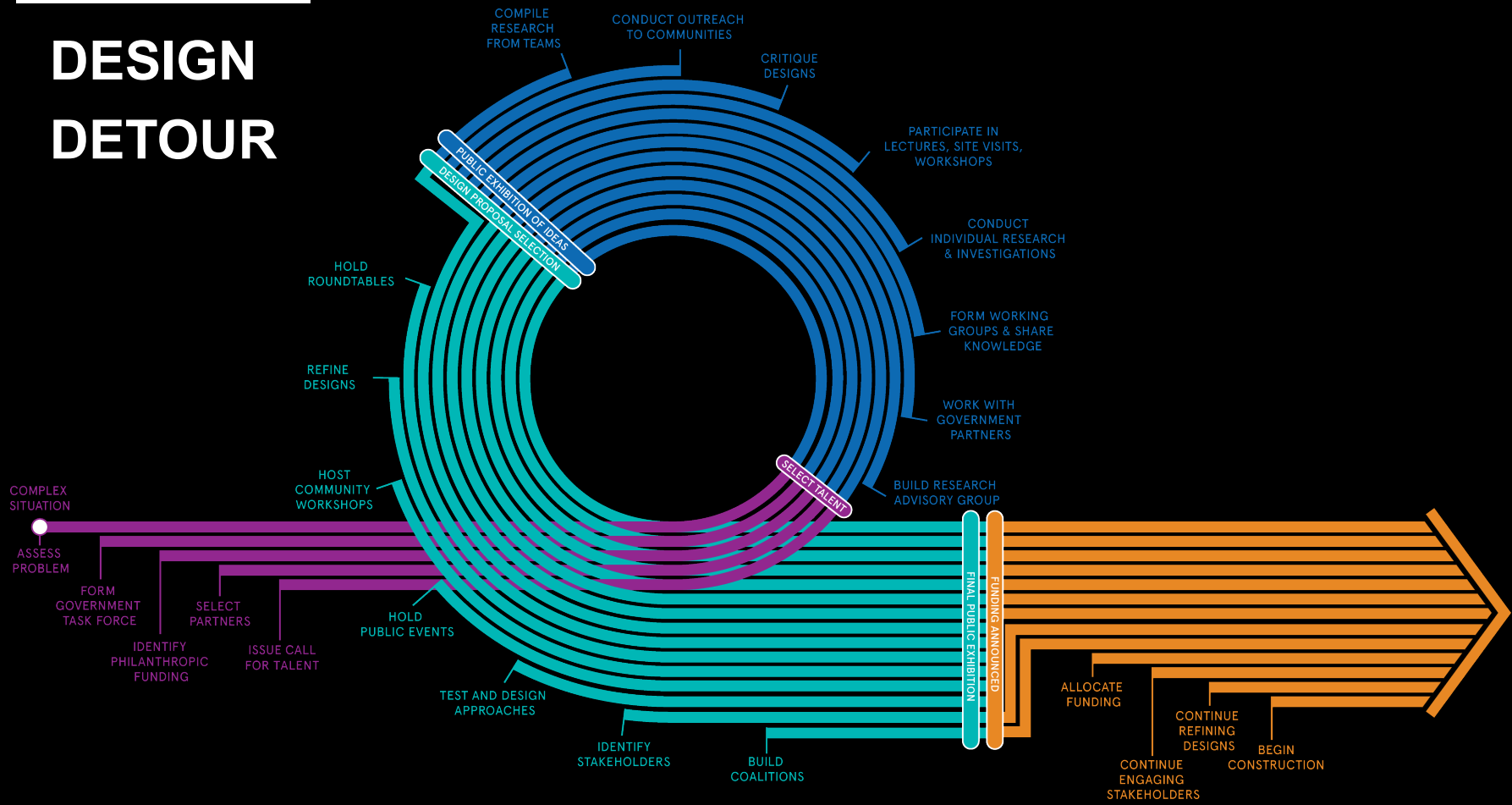


HOW SHOULD WE PROTECT OURSELVES?

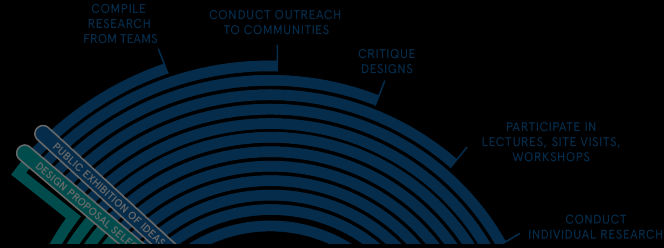


Osabe, Japan

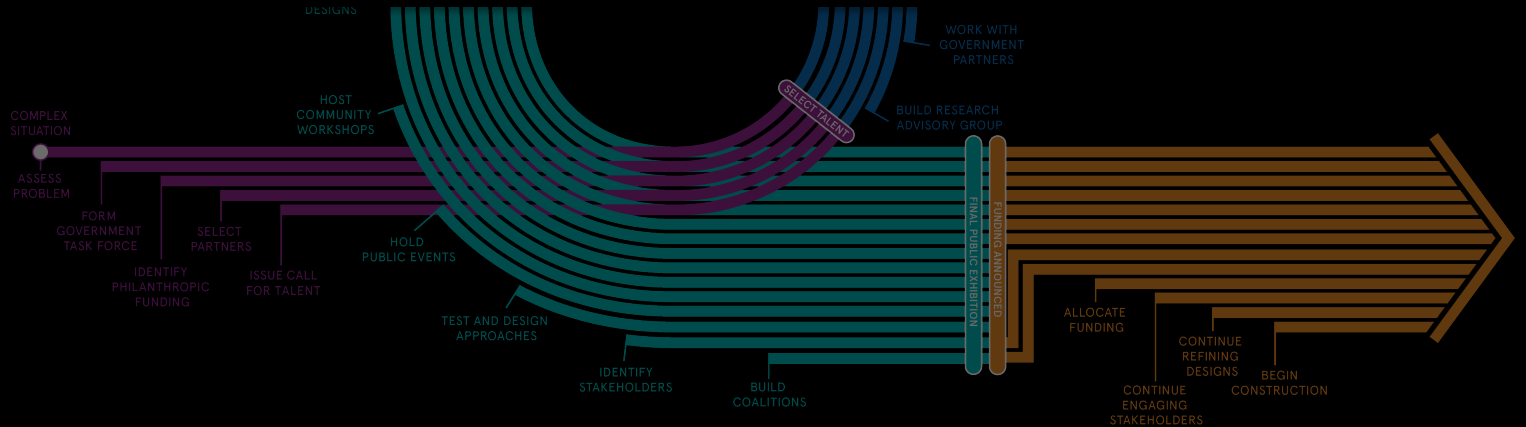
DESIGN DETOUR



OUR PROCESS



MULTI STAGE PROCESS





COLLABORATIVE RESEARCH



COLLABORATIVE DESIGN



HURRICANE SANDY DESIGN COMPETITION JUNE 2013 – JUNE 2014

- 10 Interdisciplinary Teams
- Northeast United States
- Federal Disaster Dollars (CDBG-DR) to be awarded by HUD
- Focus on the Future, Not Returning to the Past
- Infrastructure should address multiple goals at the same time
- Judged on Innovation, Collaboration and Implementation



CITY ENGAGEMENTS

- **Athens:** Promoting stewardship for Lycabettus Hill
- **Atlanta, GA:** Student design competition for Ted Turner Drive Resilience Corridor
- **Amman:** RBD_U: program on Waste, Water, Transportation
- **Boulder, CO:** Effort to create a Resilient and Sustainable Mobile Home Park
- **Fairhope, AL:** Planning for contentious downtown site

100 RESILIENT CITIES + DESIGN



REBUILD
BY
DESIGN

- **Juarez, MX:** Design Competition for Juan Gabriel Plaza
- **Los Angeles, CA:** Creating a process to update building codes to encourage sustainable development
- **Mexico City:** Master Plan framework for Xochimilco
- **Oakland, CA:** Workshop Series on Effective Engagement
- **San Juan, PR:** Community Led Master Plan/Resilience Pilot



STAGE 1: COLLABORATIVE RESEARCH



COLLABORATIVE RESEARCH

- Site Visits
- Tours
- Panel Discussions
- Community Roundtables
- Neighborhood Leader Engagement
- Design Critiques
- Data Analysis



STAGE 2: COLLABORATIVE DESIGN



COLLABORATIVE DESIGN

- Analysis of All Stakeholders
- Government Agency Meetings
- Meetings w existing coalitions
- Forming new coalitions
- Creating unusual events (bike tours, dance parties, movie screenings, parade)
- Design Charrettes
- Brainstorming sessions
- Site tours
- Wholesale Presentations at existing meetings



Design + Program developed with stakeholders



EVENTS

**MARCH 13
2014 - 6:30 PM**

Innovating for a Resilient Rockaway

SOLUTIONS FOR SMALL BUSINESS

Hosted by the Beach 116th Street Partnership
Support from The Municipal Art Society of New York
Presentation by Rebuild by Design's HRA Advisors
and Cooper, Robertson & Partners team

What can I do to protect my small business?
How do I measure resilient improvements?
What are my options?

231 Beach 116th Street
Thursday-March, 13th
6:30 PM - 8:30 PM
www.ashopbeach116.com/news-events/resilientrock/

BEACH 116TH STREET PARTNERSHIP
HRA

**first annual hunts point
slam bake**



Cooking Competition featuring the Talent, Bounty and Businesses of Hunts Point

Hosted by the Cooking Channels Baron Ambrosia

**Wednesday, March 19
5:00 PM - 8:30 PM**

banknote building

3rd Floor Event Space, 1231 Lafayette Avenue

Presentation of Dishes to Judges 5:00 PM
Slam Bake Public Tasting at 5:30 PM
Judges Announce Winners at 6:30 PM
Rebuild by Design Public Meeting 7:00 PM

Chicken, dinner, and Spanish-language translation will be provided

Presented by the PeerDesign / OUN/Rebuild by Design teams. PeerDesign and OUN were selected through the U.S. Department of Housing and Urban Development's Rebuild by Design competition to identify and develop viable infrastructure strategies for protecting Hunts Point from adverse weather events. Rebuild by Design is aimed at addressing structural and environmental vulnerabilities that Sandy imposed in communities throughout the region and developing functional solutions to better protect residents and businesses in the future.

Judging and public tasting followed immediately by a public meeting to review draft ideas for HUD's

Rebuild by Design:
plans for new infrastructure to protect Hunts Point from the next Superstorm



Citymaking Bridgeport



**Saturday
March 15
1-4pm**

Bridgeport Public Library
Pop room, 1st. floor
925 Broad St, Bridgeport CT

Bike Tour Along the Pequonnock
Design Your Ideal City: Workshop
Bike Repair: Demonstration and Clinic
Living With Water: Urban Design Station
Hack Your Bike!
Bike Art
DJ and Live Music
Free food from Pantanal, Ms Thelma's, and Rootsman
Win a Free Bikell

This afternoon festival highlights ways people around the city can take an active role in making

Citymaking Bridgeport is a coalition of Rebuild by Design, a design firm, and the U.S. Department of Housing and Urban Development (HUD). rebuildbydesign.org

Contact: jchou@v
212-924-7000 x2

INCLUSIVE

5

Philanthropic
Funders

4

Partner
NGOs

141

Neighborhoods

19

Universities

535

Community
Stakeholder Orgs

181

Government
Agencies

PROJECTS



A
BIG Team
 The BIG U
 Manhattan, NY

B
HR&A Advisors, Inc.
 with Cooper, Robertson
 & Partners
 Commercial Corridor
 Resilience Project
 Asbury Park, NJ; Rockaways, NY;
 Red Hook, NY

C
Interboro Team
 Living with the Bay:
 A Comprehensive Regional
 Resilience Plan for
 Nassau County's South Shore
 Nassau County, NY

D
**MIT CAU + ZUS +
 URBANISTEN**
 New Meadowlands: Productive
 City + Regional Park
 Meadowlands, NJ

E
OMA
 Resist, Delay, Store, Discharge:
 A Comprehensive Strategy
 for Hoboken
 Hoboken, NJ

F
PennDesign/OLIN
 Hunts Point Lifelines
 Bronx, NY

G
Sasaki/Rutgers/Arup
 Resilience + The Beach
 Union Beach, Asbury Park,
 Toms River, NJ

H
**SCAPE/Landscape
 Architecture**
 Living Breakwaters
 Staten Island, NY

I
**WB unabridged
 with Yale ARCADIS**
 Resilient Bridgeport
 Bridgeport, CT

J
WXY/West 8
 Blue Dunes - The Future of
 Coastal Protection
 Atlantic Coastline

-  Connecticut
-  New Jersey
-  New York

THE BIG U

BIG (Bjarke Ingels Group)

One Architecture

Starr Whitehouse

Buro Happold

Level Agency for Infrastructure

James Lima Planning + Development

Green Shield Ecology

AEA Consulting, Arcadis

Project Projects,

Parsons School of Constructed

Environments



LIVING BREAKWATERS

SCAPE LANDSCAPE ARCHITECTURE

Parsons Brinckerhoff

Dr. Philip Orton

Stevens Institute of Technology Ocean & Coastal

Consultants SeArc Ecological Consulting

LOT-EK, MTWTF, The Harbor School and Paul Greenberg

LIVING BREAKWATERS

STATEN ISLAND + RARITAN BAY
HUD REBUILD BY DESIGN



WHAT HAVE WE LEARNED?

**AFTER A SHOCK,
PEOPLE NEED A
PRODUCTIVE
OUTLET FOR
ANGER.**

**WE ALL
HATE YOU
SANDY**

INTERDISCIPLINARY GROUPS CREATE BETTER OUTCOMES

- Architects
- Designers
- Engineers
- Scientists
- Academics
- Writers
- Artist
- Community Engagement Specialists
- Government
- NGO Leaders



THERE IS DISTRUST IN GOVERNMENT IS EVERYWHERE

But in most cases they are needed for
implementation

Designers in the lead with the government and
community assures that community and
government are kept separate and you are
working towards the goals of each.



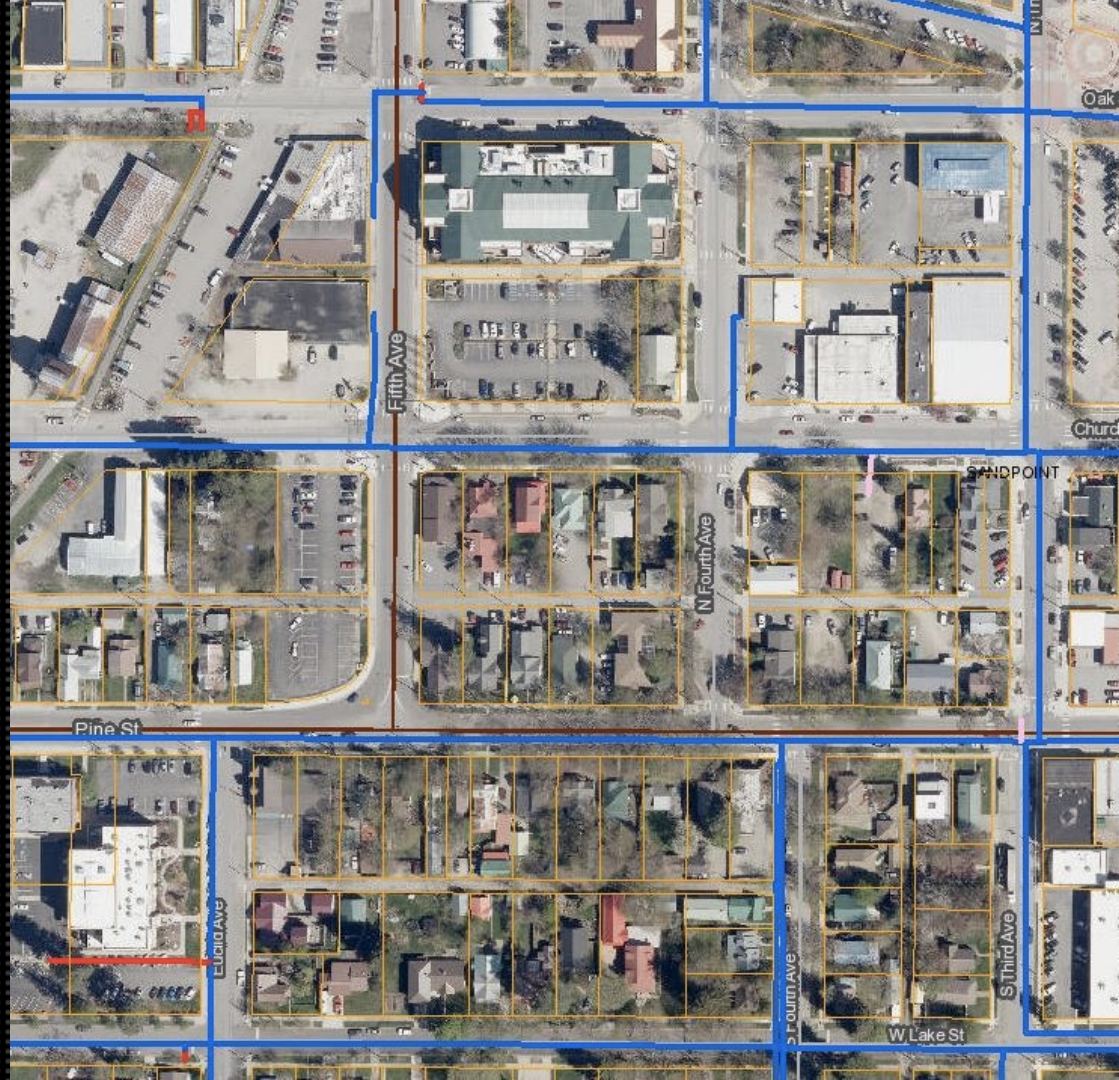
REGIONAL

WE TAKE A SYSTEMS APPROACH:

- Ignore political and system boundaries at the beginning
- Multiple agencies
jurisdictions
elected officials
NGO's

IMAGE:

https://stories.opengov.com/sandpointid/publishes/d/B_IQEvckS



REPLICABLE + TRANSFERABLE

Initial investment can have lasting payoffs to other locations in the same region and inspire others.

Examples:

- High Density
- Low Density
- Bay
- Barrier Island
- Wetland/Marsh
- Infill
- High Precipitation
- Drought



HAVING FAITH IN COMMUNITIES ALWAYS WORKS OUT IN THE END

They have great ideas
and their ideas can work!



PLANS CHANGE!

October 2019

Mayor announced a changed plan at a cost of \$700 million, which the City would fund

After Superstorm Sandy civic groups and foundations joined with the federal government to create Rebuild by Design, an international competition to develop creative, resilient new infrastructure to guard New York and New Jersey from climate change.

Seven projects, including one called the Big U, emerged and were awarded nearly a billion dollars from the federal government to start building.

Six years later, the Big U still hasn't broken ground, and the city has just abruptly announced major changes to the project with an expanded price tag and unclear additional benefits.

That's left many of the original stakeholders asking: Just how committed is the city to leading the way on resilience?

The Big U, which called for a series of berms and parkland that would act as a sponge during major storms, was designed to protect Lower Manhattan from flooding. This area houses more than 220,000 residents as well as a \$100 billion business sector; if it gets hit by seawater, the whole country is in trouble.

The city's odd storm splurge

BE OUR GUEST
BY AMY CHESTER AND TOM WRIGHT

By 2015, the first two sections of the project — from E. 25th St. to the Brooklyn Bridge — received \$511 million in federal funding, later matched by \$542 million from the city, which also led dozens of meetings with residents to craft an intelligent, effective plan.

Then earlier this year, the city went dark.

A few weeks ago, after several months of silence, the mayor's office announced radical changes to the northern portion of this project. Instead of building a berm, or narrow shelf of land, alongside the FDR Drive, and leaving East River Park to act as a sponge during major storms, they now plan to completely raise the entire, recently renovated park 8 to 10 feet.

It's hard to determine whether the new design will be better or worse since the city hasn't released any details. We do know a few things: The northern portion of the Big U will now cost an additional \$700 million (bringing the price tag for this section to \$1.45

billion); offers no additional flood protection; no additional community amenities, and should have already been well underway.

Spending \$700 million to get a better park or more flood protection might be welcomed, but that's not what the city is offering. Instead, it seems, this money is buying the city out of having to grapple with two thorny problems.

The first, inconveniencing drivers on the FDR, which would require overnight closures to build the original design.

The second challenge is more complex. The original design called for East River Park to flood in the event of a big storm. Other privately managed parks including Brooklyn Bridge Park and Domino Park are designed to do this, and provide an extra layer of protection to their surrounding communities.

But the Parks Department doesn't have a maintenance budget or process to restore city parks after a major storm event. Instead of fixing that problem,

the city proposes to skirt it by lifting the whole park. That seems unwise.

The city has said that this new approach will shorten construction by six months, but for a project that is designed to last for more than a generation, that's already been slow-walked, let's make sure we get it right.

Mayor de Blasio should engage with the public to determine the best use of

an additional \$700 million. Perhaps that will mean using the funds to extend the Big U to the Battery, which was underfunded. Perhaps we should use the money to create a maintenance budget for the

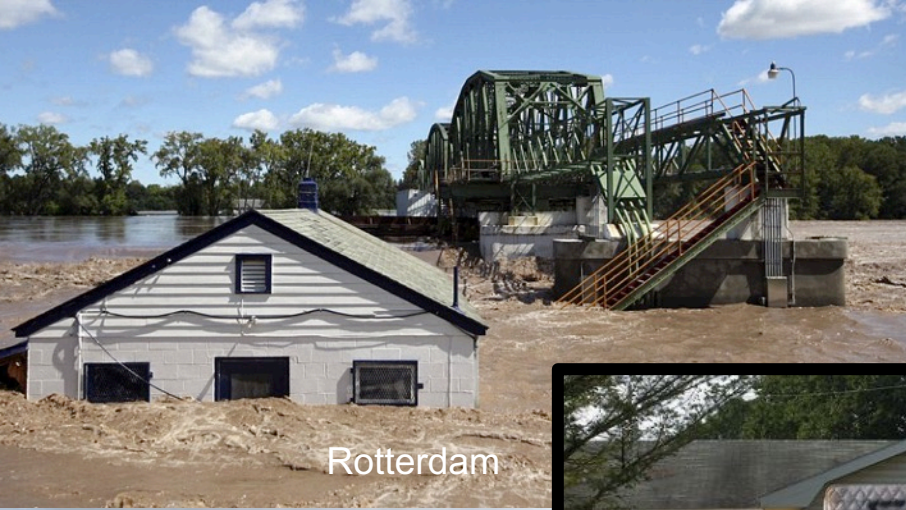
city to maintain flood infrastructure over time.

If they want to insist their way forward is the best, let's hear them make the case.

Chester is managing director of Rebuild by Design. Wright is the president of Regional Plan Association, one of the original partners of the Rebuild by Design competition.

Why does Blaz want to spend \$700M more on a resiliency plan?

New York Daily News



Rotterdam



Binghamton



Schoharie



Broome County



Pratsville

THANK YOU!

Amy Chester, Managing Director
achester@rebuildbydesign.org