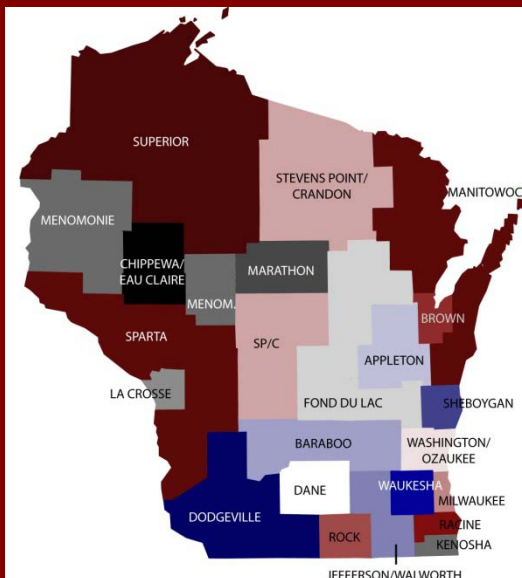




The First WISCONSIN POVERTY REPORT

Tim Smeeding

Director and Distinguished
Professor of Public Affairs



A Report from the
Institute for Research on Poverty

May 2009

First Wisconsin Poverty Report

- Why this report?
- Why now?
- Why us?

- What is inside—Copies being distributed today
(PDF also available at <http://www.irp.wisc.edu>)

Apology -- “Waushara” is really “Waukesha”

“Lake Region of Waukesha County, Wis.,” ca. 1911, Wisconsin Historical Society Image No. 22971



WATER SUPPLY
The water supply of the region is derived from the following sources:
1. Rainfall
2. Snowmelt
3. Groundwater
4. Surface water
5. Wells
6. Dams
7. Reservoirs
8. Ponds
9. Springs
10. Rivers
11. Streams
12. Lakes
13. Canals
14. Pipelines
15. Other sources

OCONOMOWOC, WAUKESHA
AND THE
LAKE REGION OF WAUKESHA COUNTY, WISCONSIN
All these lakes and streams are under the management of the
U. S. GEOLOGICAL SURVEY & ST. PAUL, MINN.

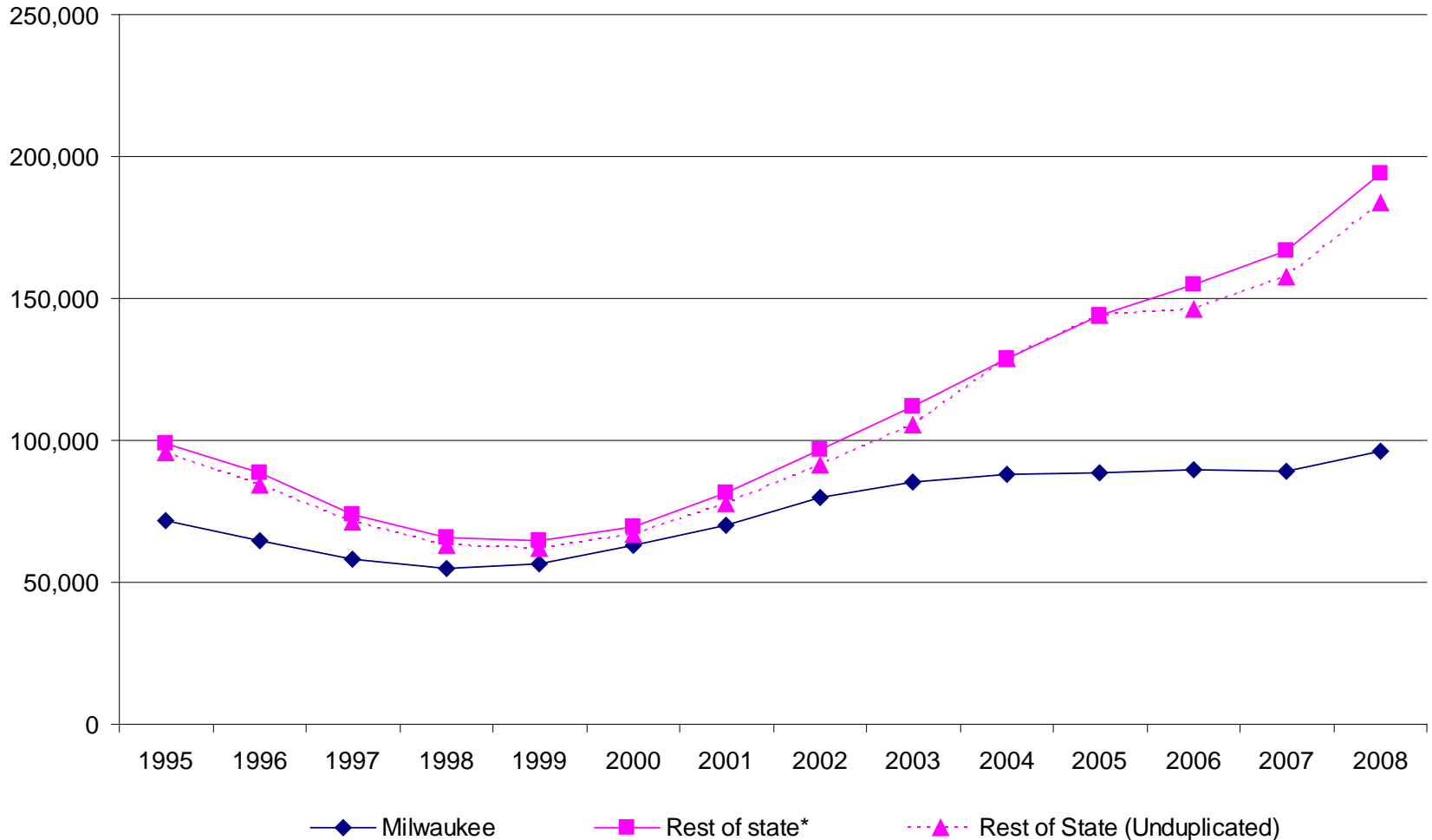
POPULATION
The population of the region is as follows:
1. Oconomowoc
2. Waukesha
3. Other towns
4. Other villages
5. Other hamlets
6. Other settlements

The Situation in Wisconsin: Our Approach

- Use latest data *within* Wisconsin (2007)
- Update to March 2009 with changes in SNAP/FoodShare enrollments
- Use Federal poverty definition, but hoping to update with better (NAS) approach over the next year

Why Look at SNAP/FoodShare Data ?

Figure 1
Food Stamp Caseload (Households) in Milwaukee and the Rest of the State

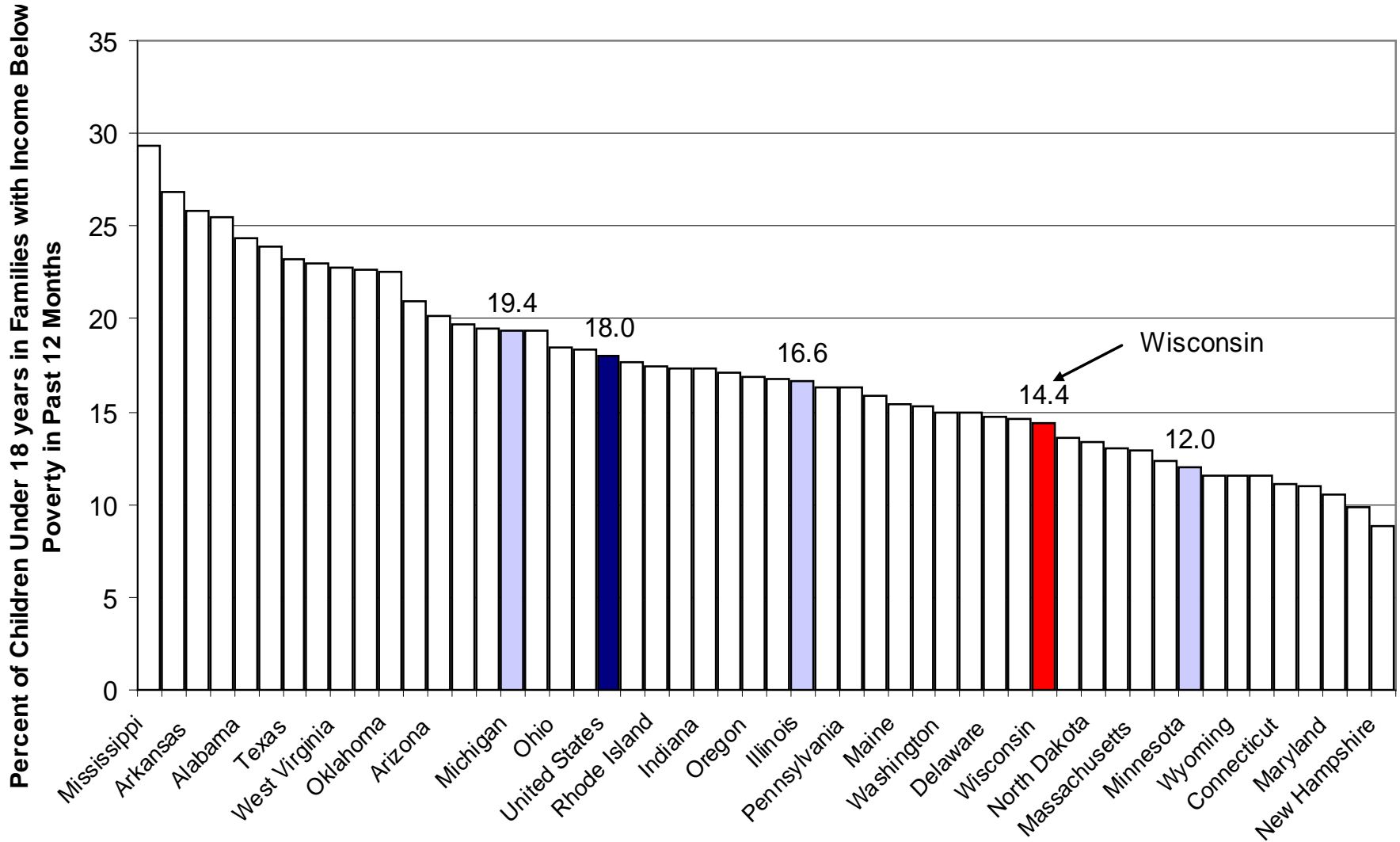


*Households receiving assistance in more than one county in a year are counted more than once.

Poverty and Children: Wisconsin vs. USA and Neighbors in 2007

- Child Poverty – 37th from the top, not bad
- Other poverty measures – better than USA, Michigan, close to Illinois, but not as low as Minnesota
- Best feature of all – highest percent of children with health insurance (way to go Badger Care!)

Child Poverty across Neighboring States



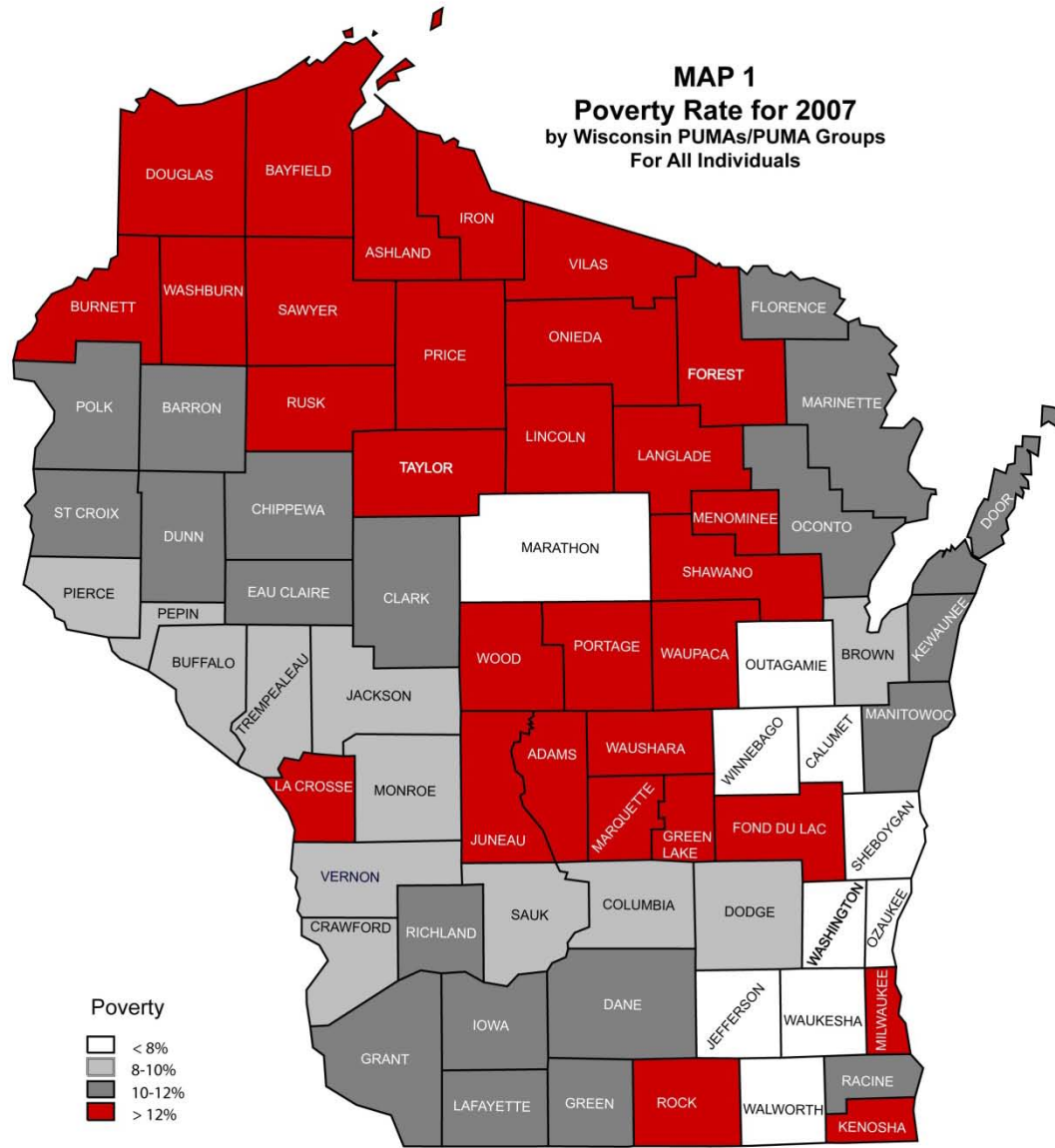
Poverty across the Region

Indicators	Wisconsin	United States	Illinois	Michigan	Minnesota
Poverty Rates (Percent)					
All Children	14.4	18.0	16.6	19.4	12.0
All Individuals	10.8	13.0	11.9	14.0	9.5
Children in Married-Couple Families	4.9	8.4	7.2	7.9	5.0
Children in Female-Headed Households (no husband present)	41.8	43.2	41.3	47.7	38.2

Poverty *within* Wisconsin

- Going beneath the state level and boring in on counties (10), multi-county areas, and 6 areas within Milwaukee County
- Data from 2007 ACS
- Poverty and income cuts for all persons and for children (could do more and better with funding)
- Poverty maps: **Red** (highest); Dark Grey (above average); Light Grey (below average); White (lowest)

Overall Poverty

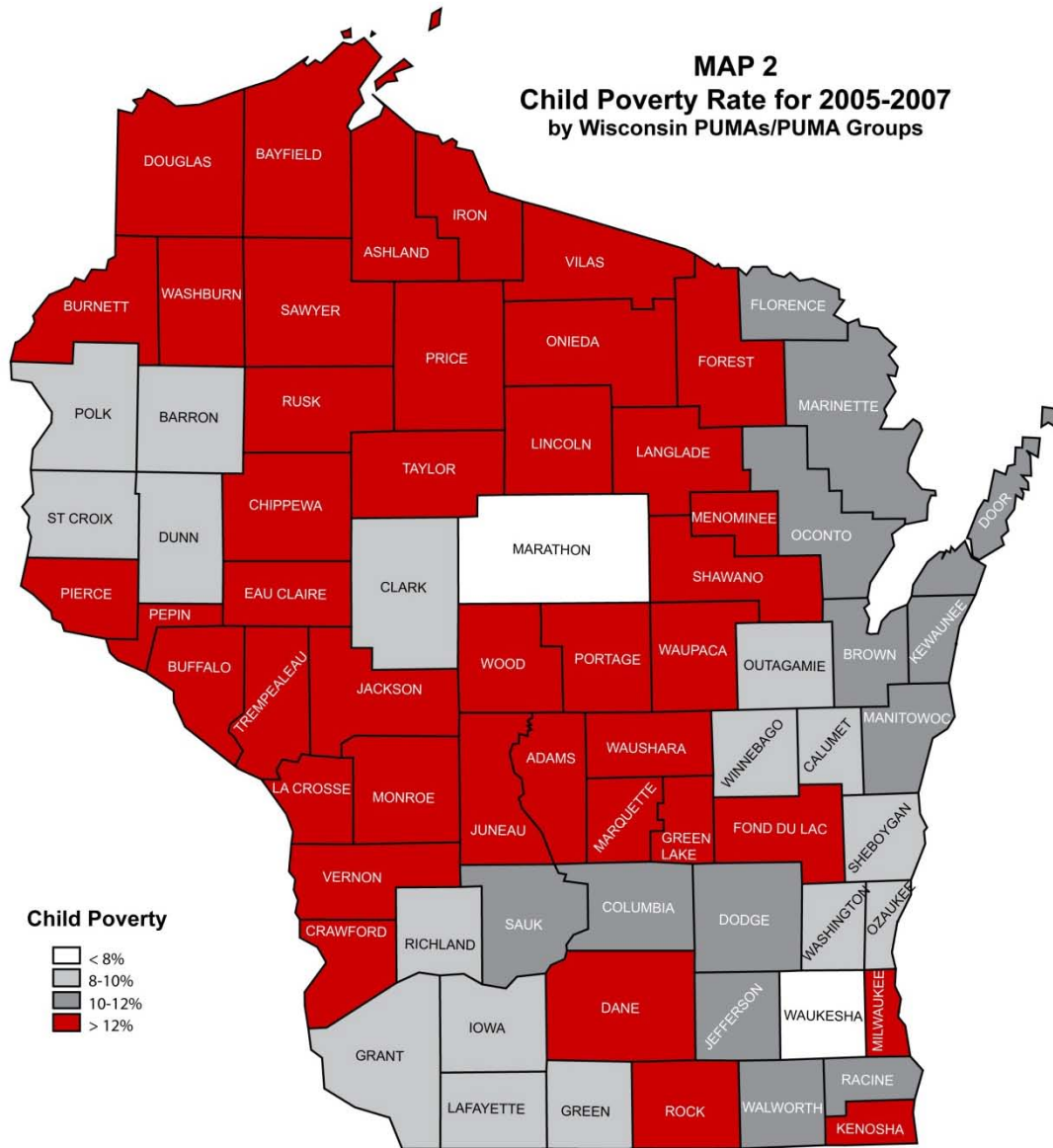


Child Poverty within Wisconsin

- Child Poverty—a more serious issue: 14.4% of kids are poor statewide vs. 10.8% overall rate for all individuals
- Milwaukee overall: Kids 25.6%; overall 17.8%, and much worse in central city
- Map—same scales: **Red** (worst), Dark Grey, Light Grey, White (best)

Child Poverty

MAP 2
Child Poverty Rate for 2005-2007
by Wisconsin PUMAs/PUMA Groups



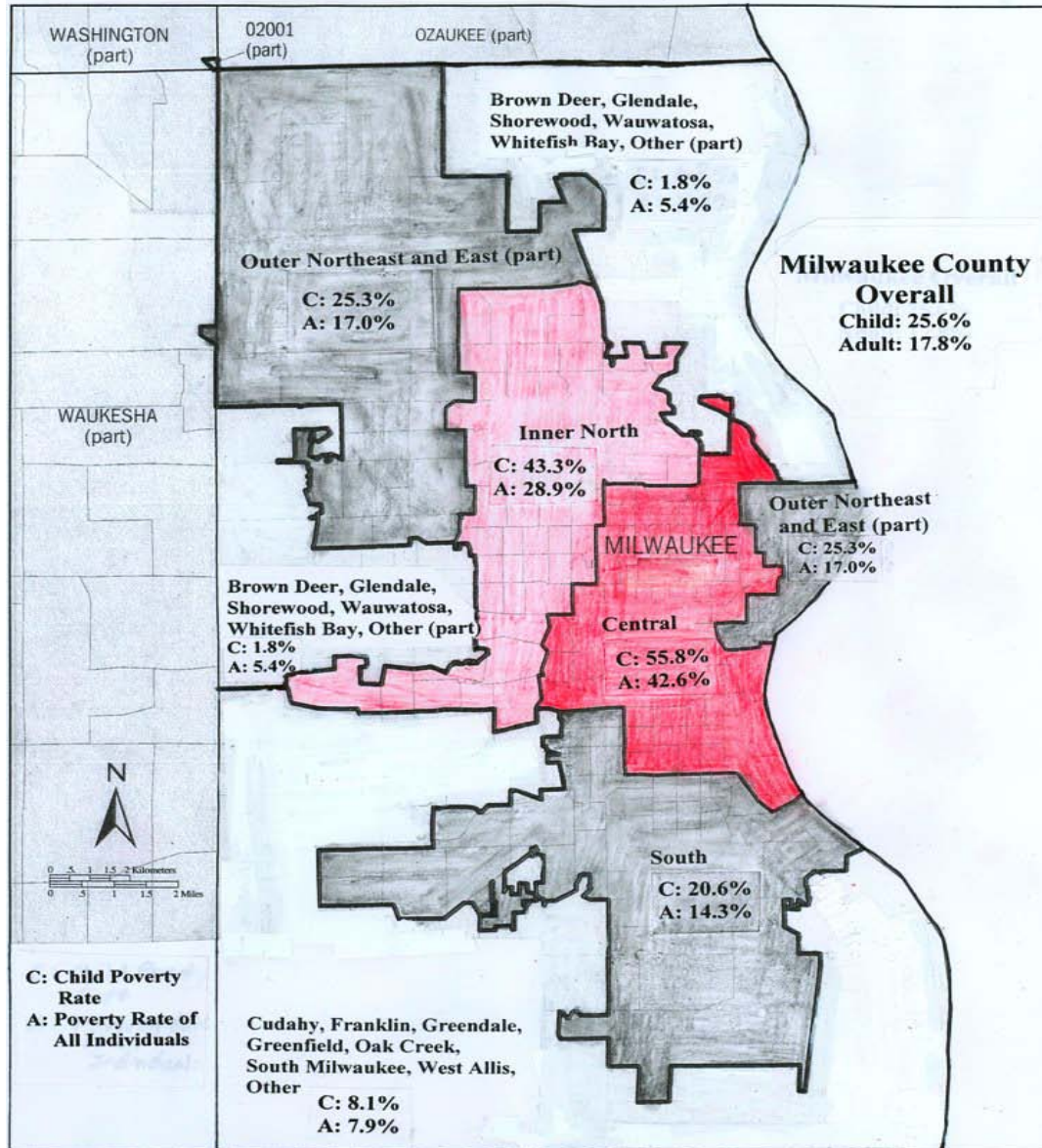
Where are the Poor *within* Wisconsin?

- The three areas with the highest 2007 poverty rates for all individuals are:
 - Milwaukee County
 - Northwestern Wisconsin (10-county area)
 - Rock County

Where Are the Poor *within* Wisconsin? The Case of Milwaukee

- Look at 6 areas within Milwaukee county (can also do Dane and Brown, but concentrate on Milwaukee here):
 - Central City (child poverty): **almost 59%**
 - Inner North: **45.3%**
 - Outer Northeast-East: **25.3%**
 - Suburbs Northeast and West: **1.8%**

Poverty Rates in Milwaukee Super-PUMAs, 2005–2007



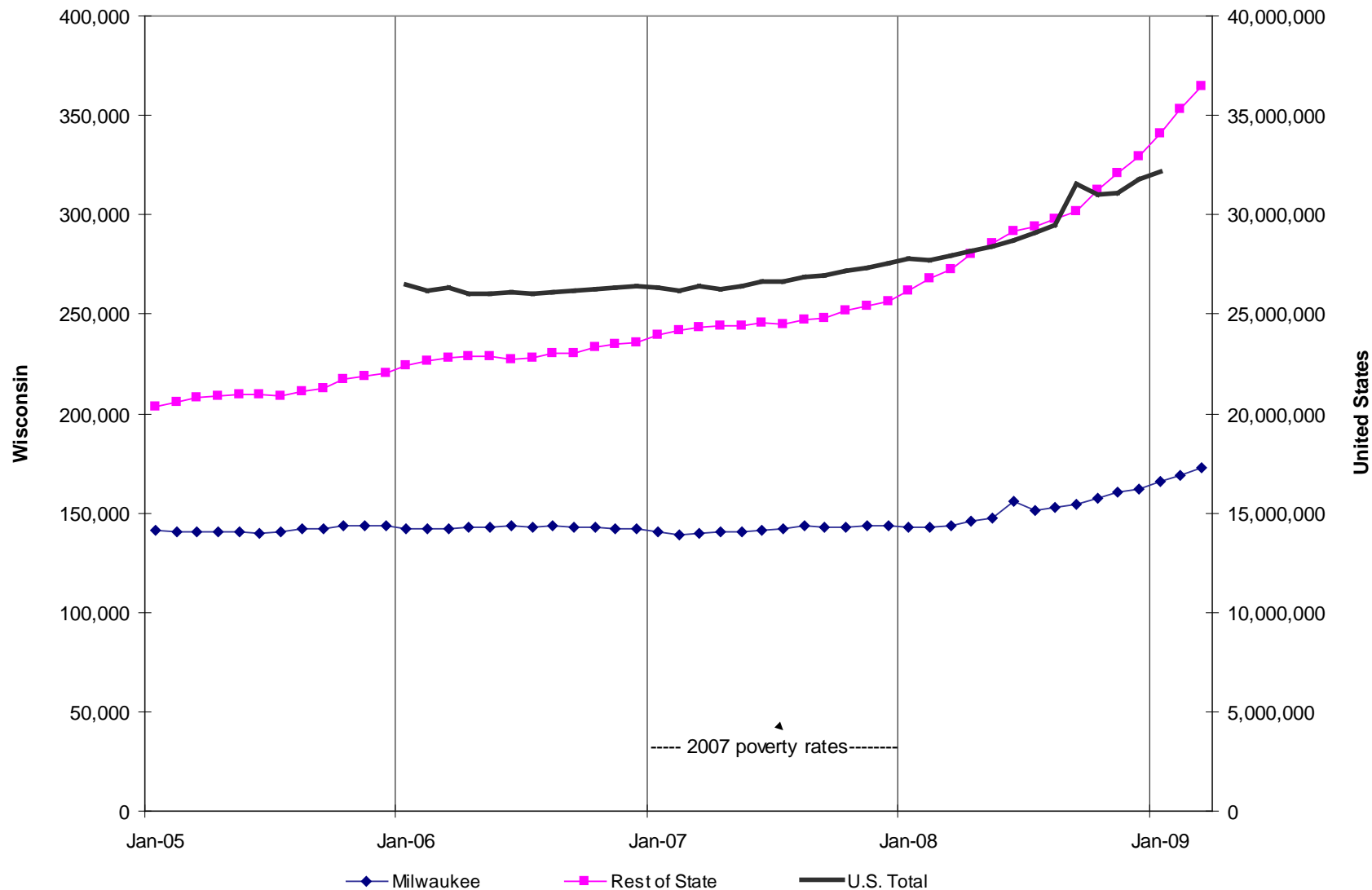
Low Income *within* Wisconsin: Targeting the Near-Poor

County	Below Poverty	100% – 150% of Poverty	150% – 200% of Poverty	Above 200% of Poverty
Milwaukee	25.6	14.2	12.1	48.0
Dane	12.9	6.1	6.2	74.7
Waukesha	3.9	3.5	4.4	88.3
Brown	10.2	9.0	8.8	72.0
Racine	11.0	10.7	11.1	67.2
Kenosha	16.0	9.2	5.3	69.5
Rock	13.4	7.8	12.2	66.5
Marathon	6.3	10.9	15.0	67.8
Sheboygan	9.0	12.3	13.4	65.3
La Crosse	16.1	9.1	11.6	63.2

Updating Poverty with Food Need: SNAP Growth *within* Wisconsin, (March)2007- 2009

- How to be more current than 2007 ACS?
- Use SNAP caseloads within counties to update poverty with changes in food need
- Why SNAP vs. other?
 - Timely
 - Universal
 - Need-based and targeted at the poor
- What do we find—an **EXPLOSION** of need!

Updating the Poverty Figures With the SNAP Explosion: 37-percent growth in just two years

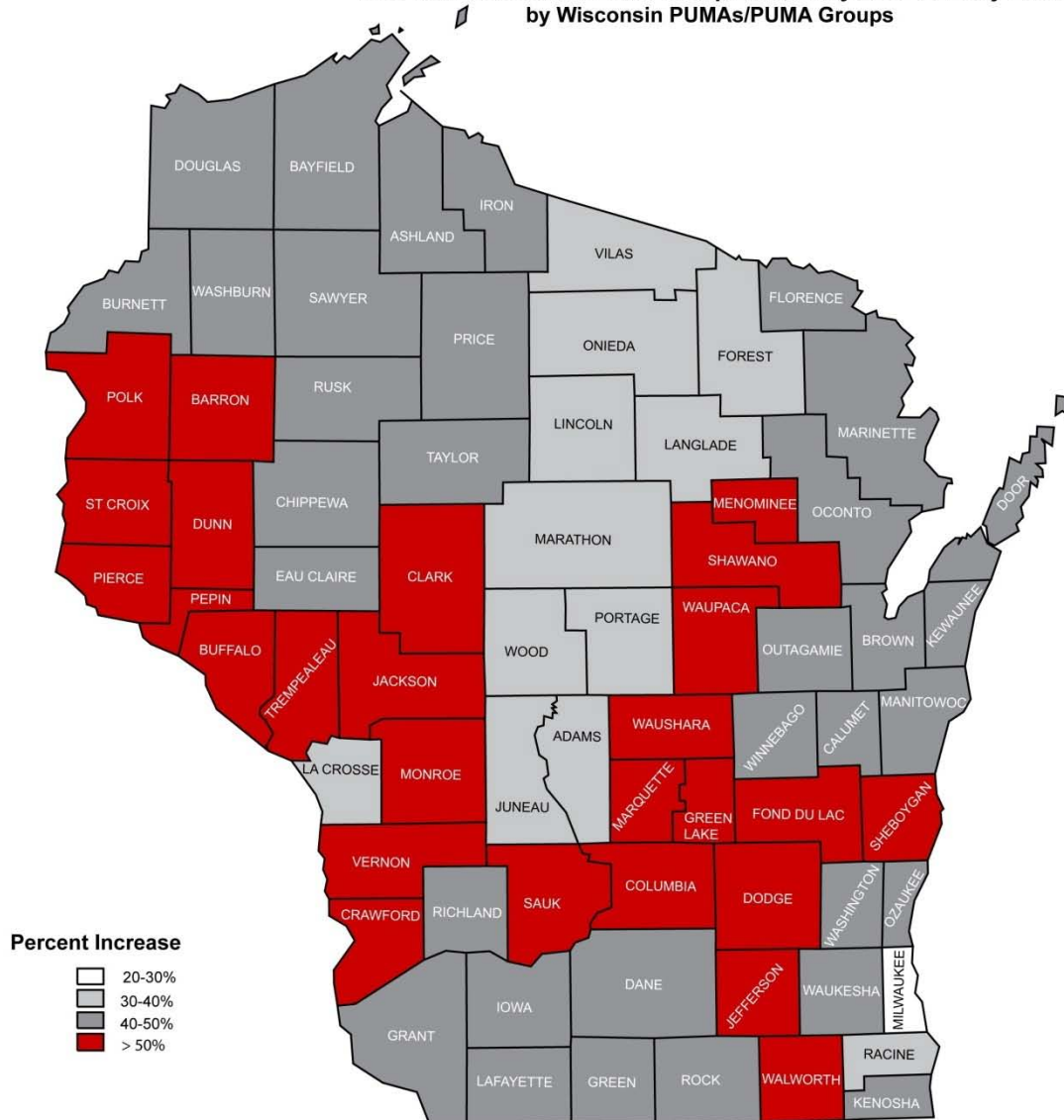


SNAP Growth Map: March 2007 – March 2009

- **Red** growth more than 50 percent
- Dark Grey growth 40-50 percent
- Light Grey growth 30-40 percent
- White growth—Milwaukee-21 percent from an already high base
- Could also do benefit amounts to get at depth of food need in later reports

SNAP Growth by Wisconsin Area

MAP 3
Two-Year Increase in SNAP Recipients, Early 2007 to Early 2009
by Wisconsin PUMAs/PUMA Groups



Pulling the Picture Altogether

- Poverty Rate (**Red** highest)
- SNAP Growth (**Green** highest)
- Major need: Superior; Sparta; Fond du Lac
- Also La Crosse and Milwaukee; Menominee and Baraboo

- Estimate of current poverty rate: **12.6%**

Pulling It Together

Wisconsin Poverty in 2005-2007 and Growing SNAP Caseloads in 2007-2009 by County and Region

	Higher SNAP Growth (above 50%)	Medium SNAP Growth (Between 40% & 50%)	“Lower” SNAP Growth (Between 20% & 40%)
High Poverty (12% or higher)		10-county area (Superior)	La Crosse County Milwaukee County
Above Average Poverty (10% to 12%)	8-county area (Sparta) 7-county area (Fond du Lac)	Dane County Kenosha County Rock County Chippewa/Eau Claire region	9 central WI counties (Stevens Point, Crandon) Racine County
Below Average Poverty (8% to 10%)	5-county area (Menomonie) Columbia/Dodge/Sauk (Baraboo)	6-county area (Manitowoc) Brown County Jefferson/Walworth Region 5-county area (Dodgeville) Calumet/Outagamie/ Winnebago counties	
Low Poverty (less than 8%)	Sheboygan	Ozaukee/Washington (West Bend) Waukesha	Marathon County

What's Wrong with this Report? We Can Do More and Better

- Better: Need to update both data and methods to include NAS approach (taxes, EITC, food benefits, housing)—but with WI twist
- More depth (age, race, gender, disability)
- Build a better tool for assessing economic, program and policy impacts

Thanks

- Send your reactions to me, please:

Tim Smeeding

Director, Institute for Research on Poverty

smeeding@lafollette.wisc.edu

