

# **Components of Change in the Relative Size of the Foreign- Born Population, 1960-2000**

**Franklin D. Wilson  
University Wisconsin-Madison  
Wilson@ssc.wisc.edu**

# Objectives

- This study employs a synthetic cohort approach to study changes in the size of the foreign-born population arriving in the decade prior to the census, identified by questions regarding foreign-birth (non-U.S. citizen) and “year of arrival.” The research questions to be addressed are what factors determine the relative size of this population in a subsequent census, and, by taking account of these factors, what can be learned about the “quality” of census data in estimating the foreign-born population of the United States.

# The foreign-born population that arrived in the decade prior to the census consists of the following:

- Legal immigrants – persons who are or have applied for permanent U.S. resident status;
- Legal non-immigrants – persons admitted with employment or school related visas, and their dependents; and diplomats and their dependents;
- The unauthorized – persons who entered the U.S. illegally or who failed to leave once their visa expired;
- Return migrants, who emigrated, and returned during the decade ( may also include an unknown share of (1-3) who arrived in a previous period, emigrated, then subsequently returned);
- Individuals who were incorrectly identified as having arrived in a decade.

# Can the actual size of this population be determined?

- Extant census methodology makes this difficult if not impossible.
- 1) Coverage or enumeration errors.
- 2). Some individuals who arrived during the decade are not present at the time of the census because of emigration and mortality.
- The substitution of the American Community Survey, which is conducted annually, for the census long-form may help to improve the accuracy of the estimates.

Figure 1. Recently Arrived Foreign-Born Population

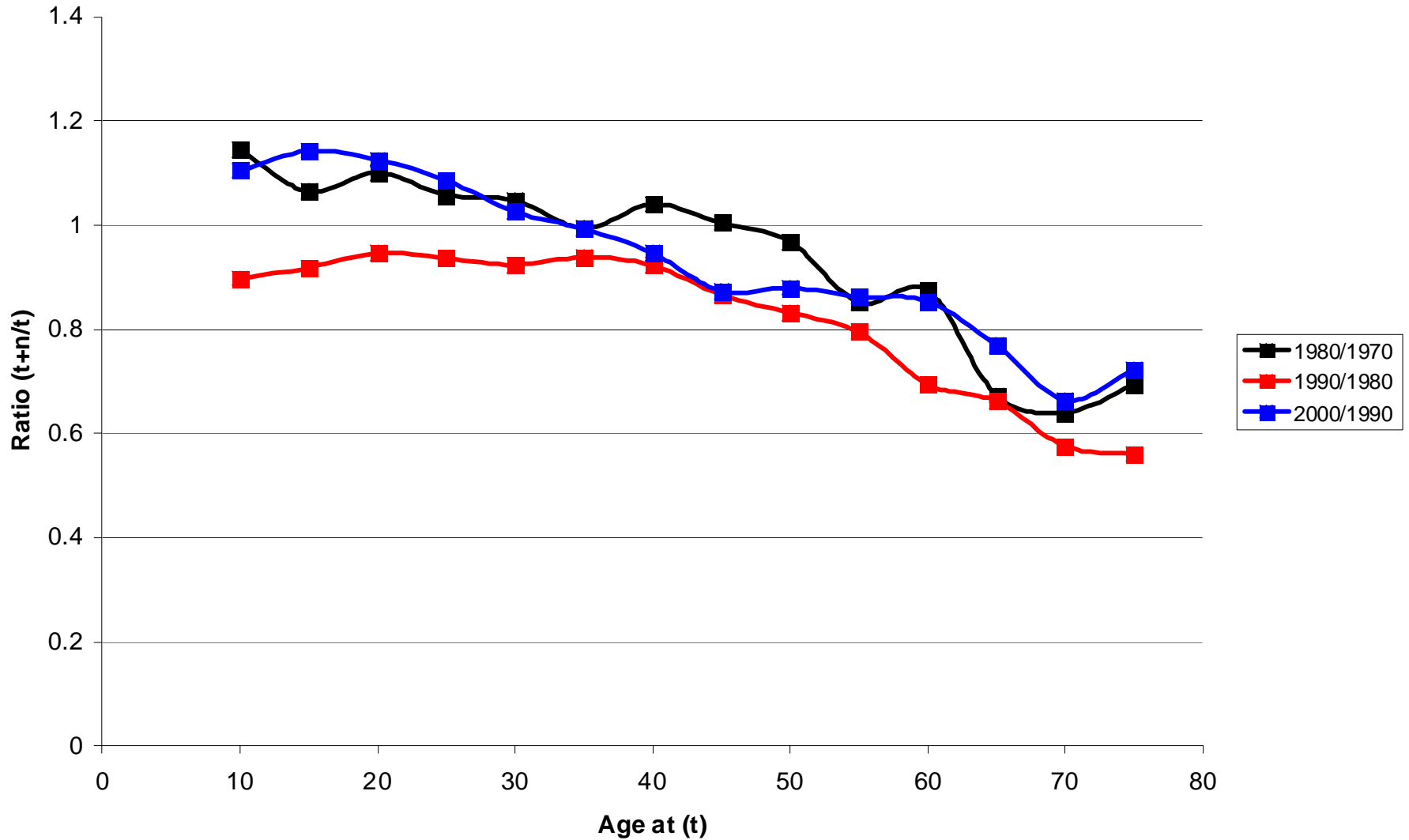
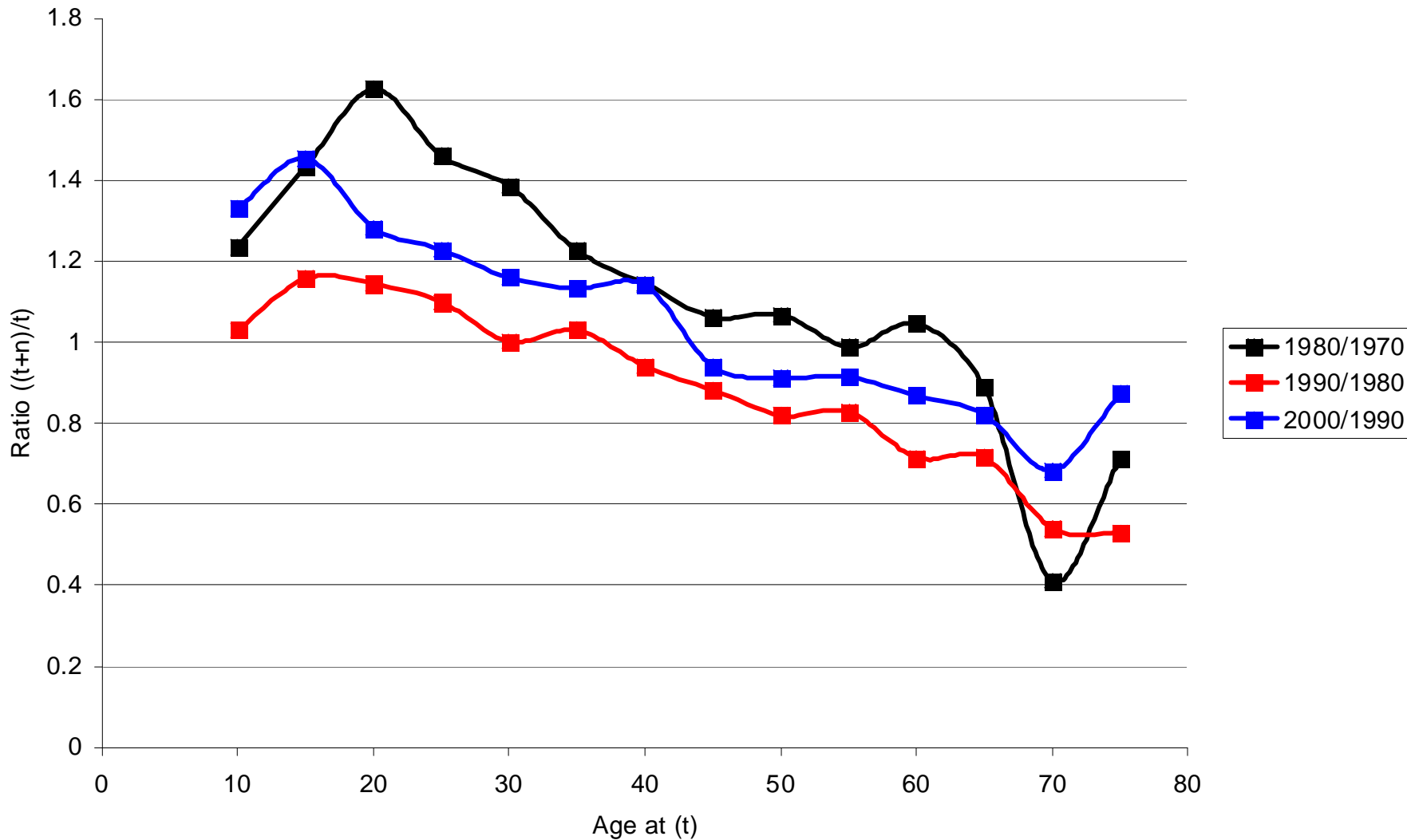


Figure 2. Recently Arrived Mexican-Origin Population



# Sources of change in the size of the recently arrived foreign-born population

- 1. Mortality
- 2. Emigration
- 3. Return migration
- 4. Change in visa status  
(legal non-resident to permanent resident, etc)
- 5. Enumeration errors
- 6. Reporting errors

Figure 3. Recently Arrived Foreign-Born Population-Citizen

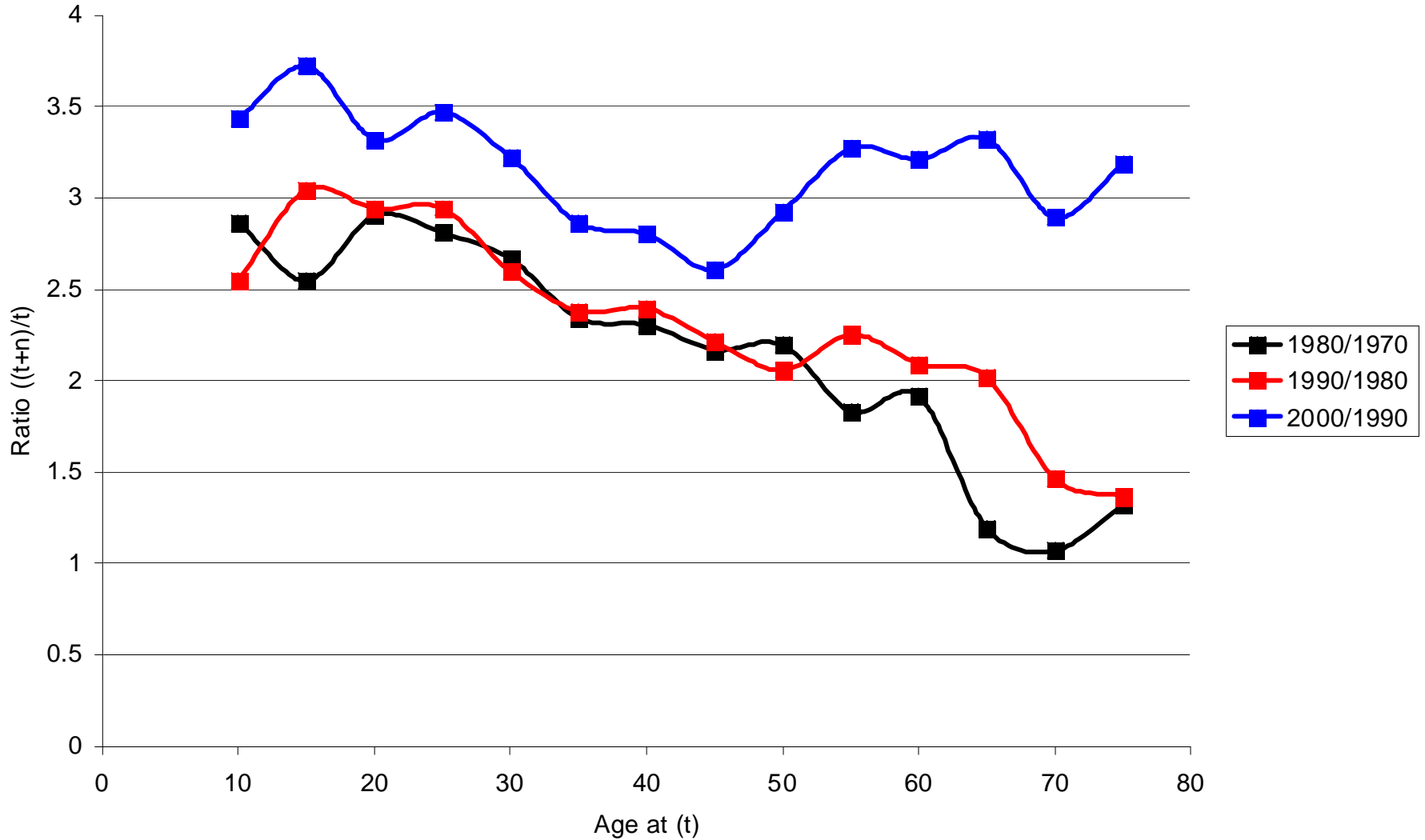


Figure 4. Recently Arrive foreign-Born Population Non\_Citizen

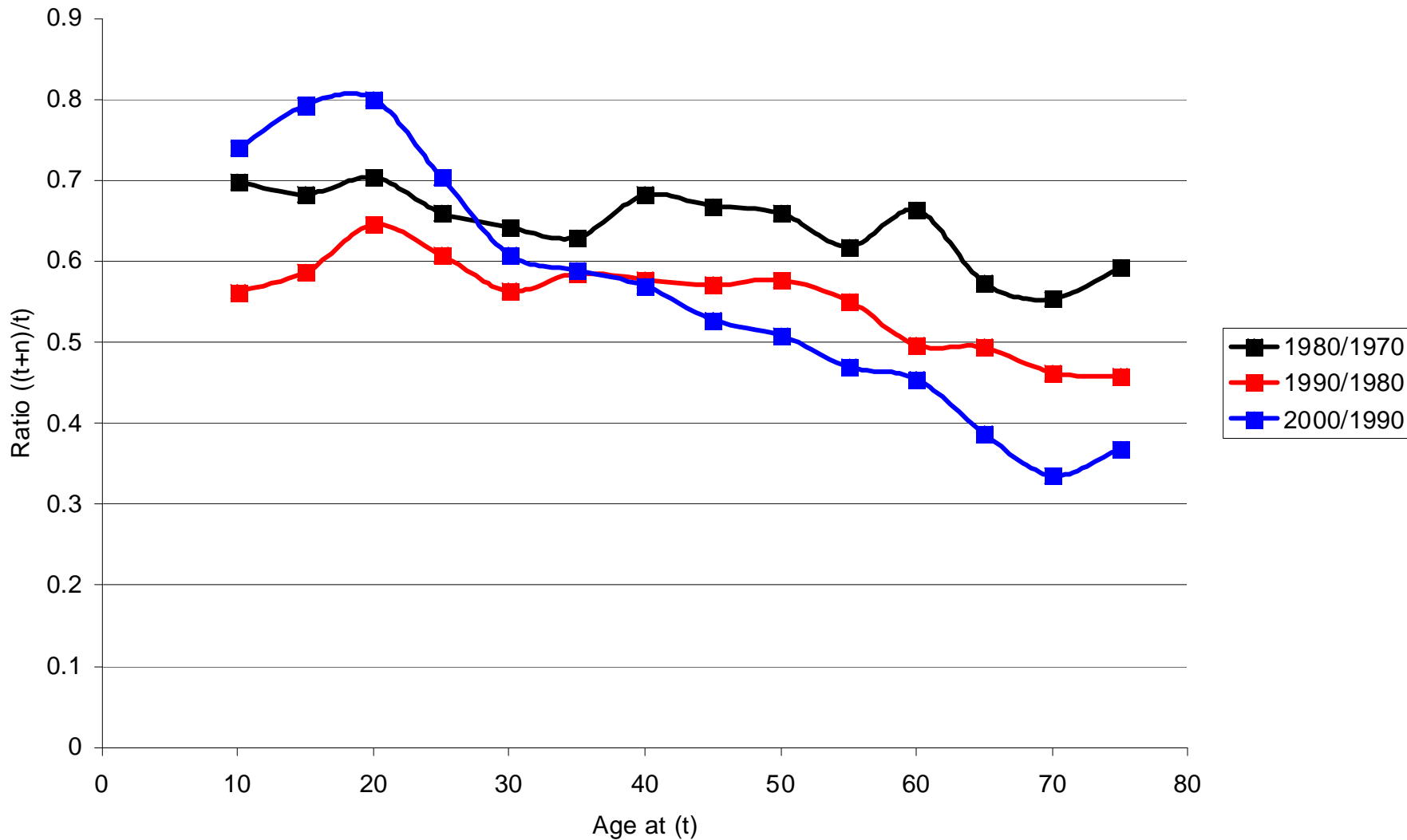


Figure 5. Recently Arrived Mexican-Origin Population-Citizen

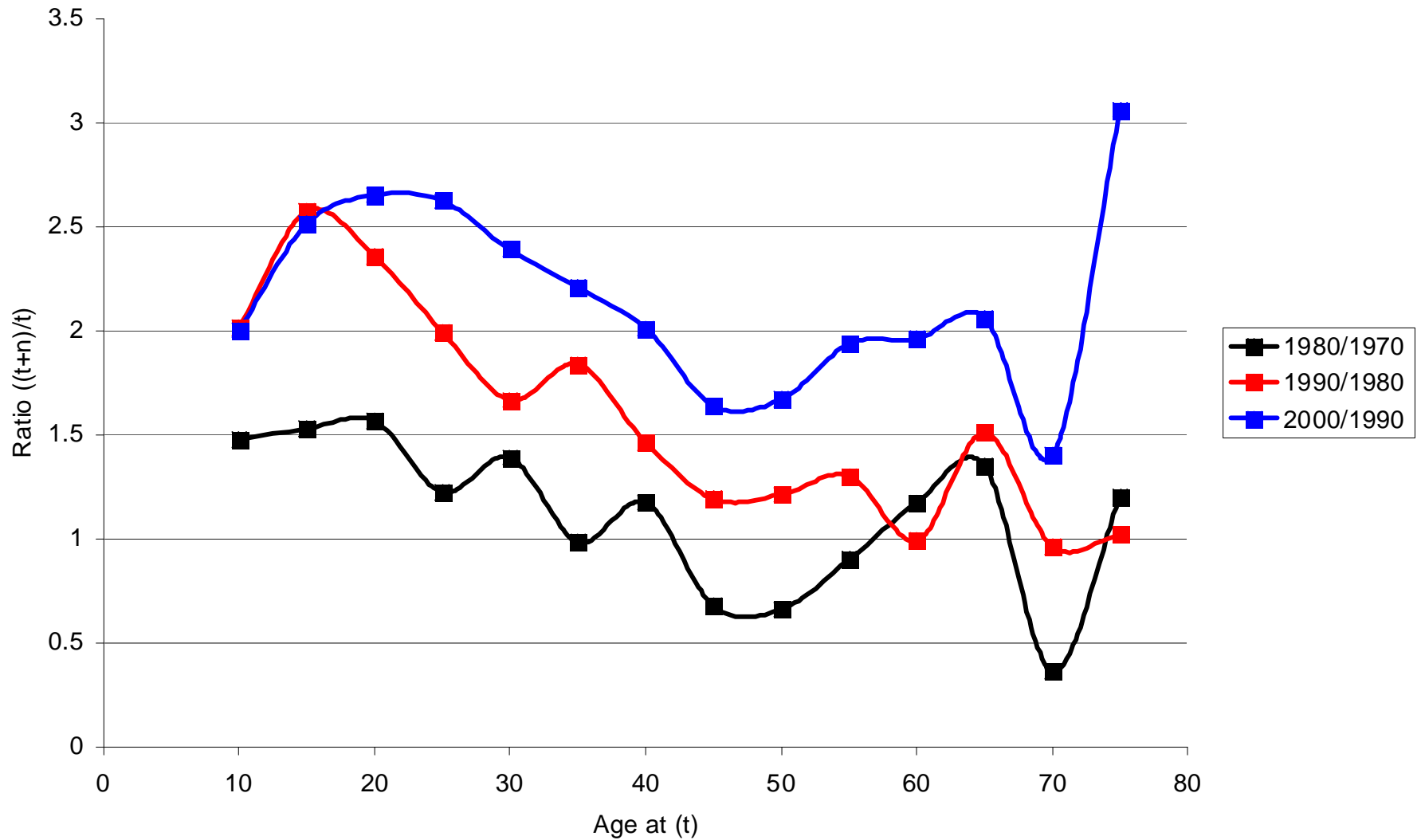


Figure 6. Recently Arrived Mexican-Origin Population Non-Citizen

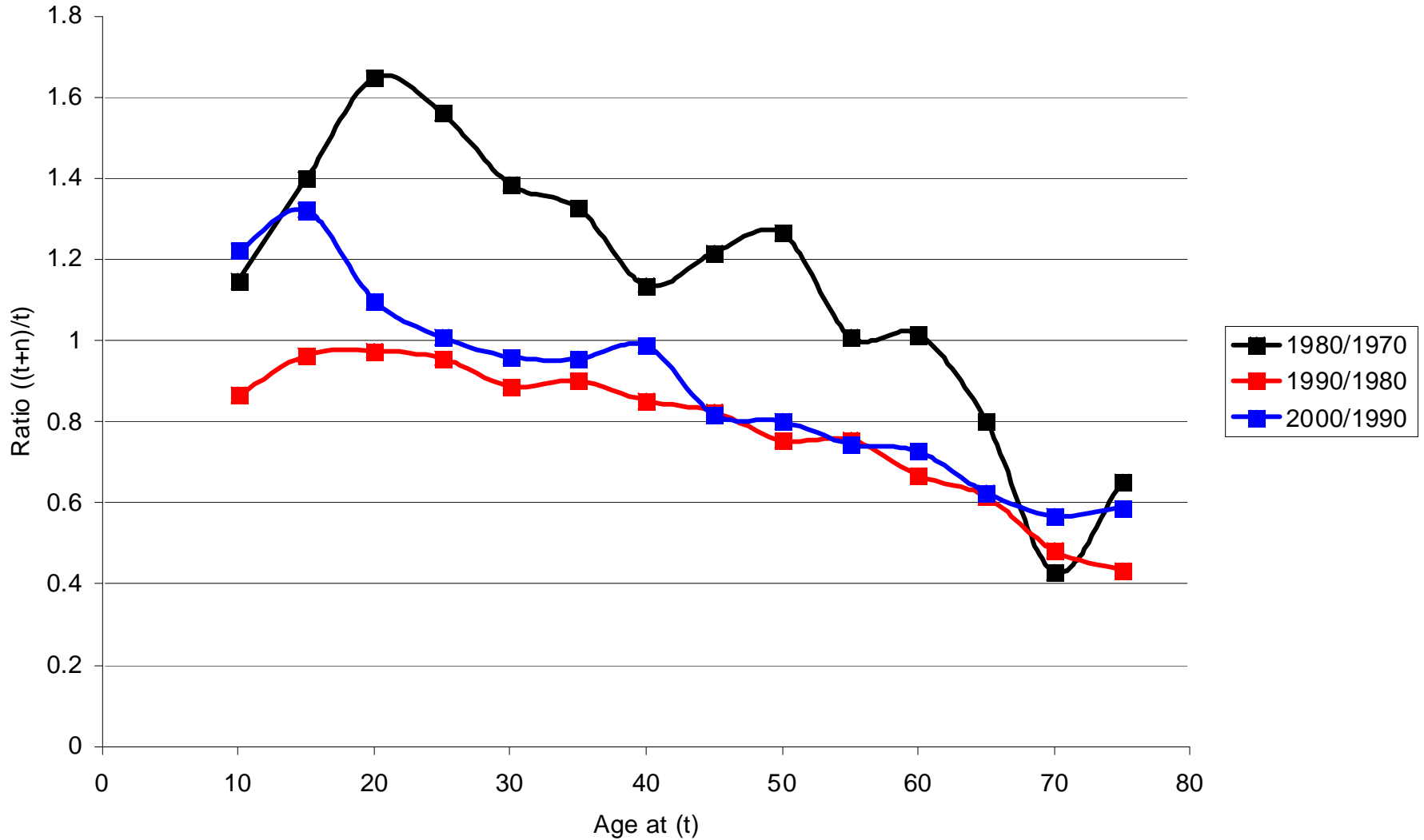


Figure 10. Share of Foreign\_Born who were Citizens at Beginning of Period

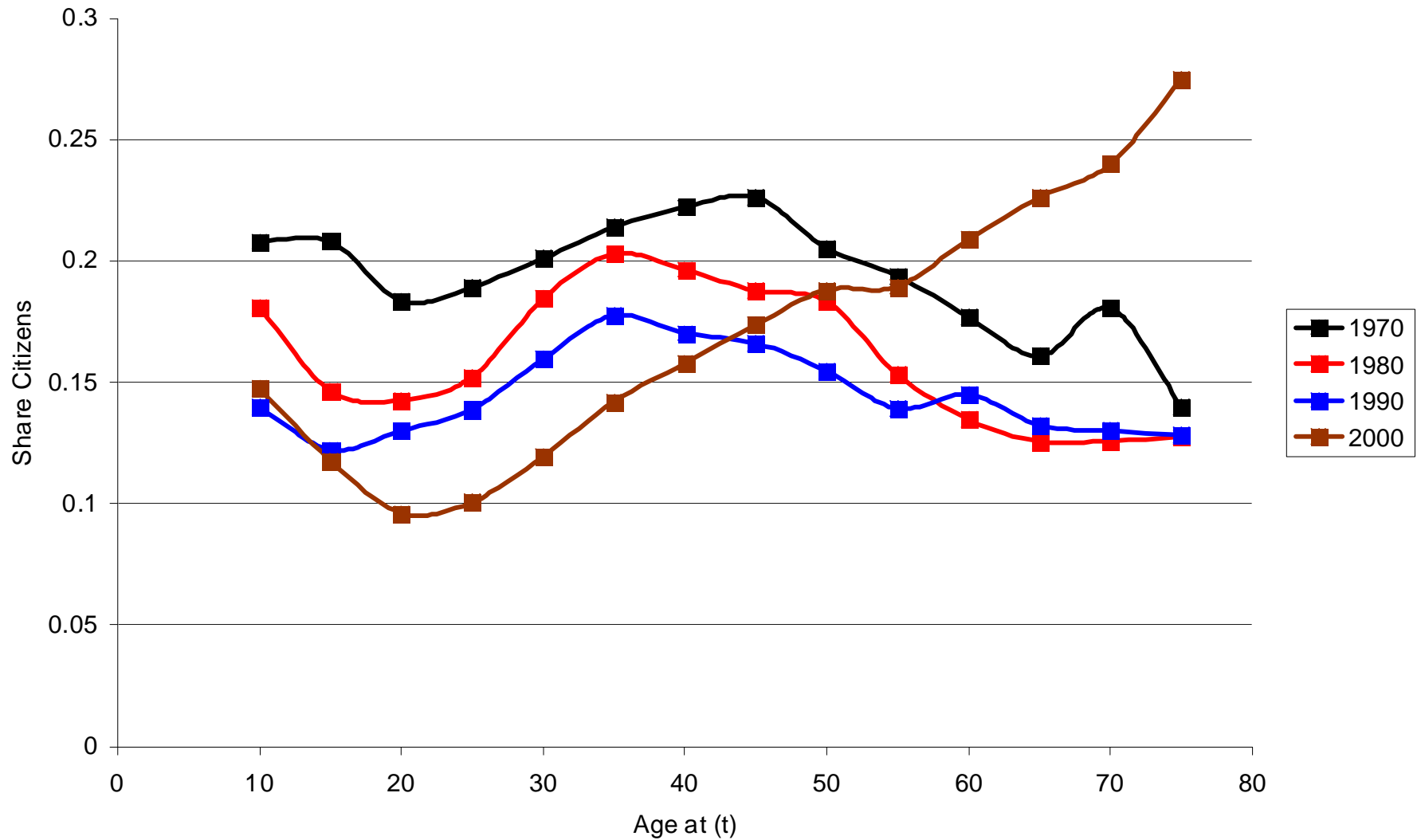


Figure 14. Share of Mexican-Origin Who were Citizens at the Beginning of Period

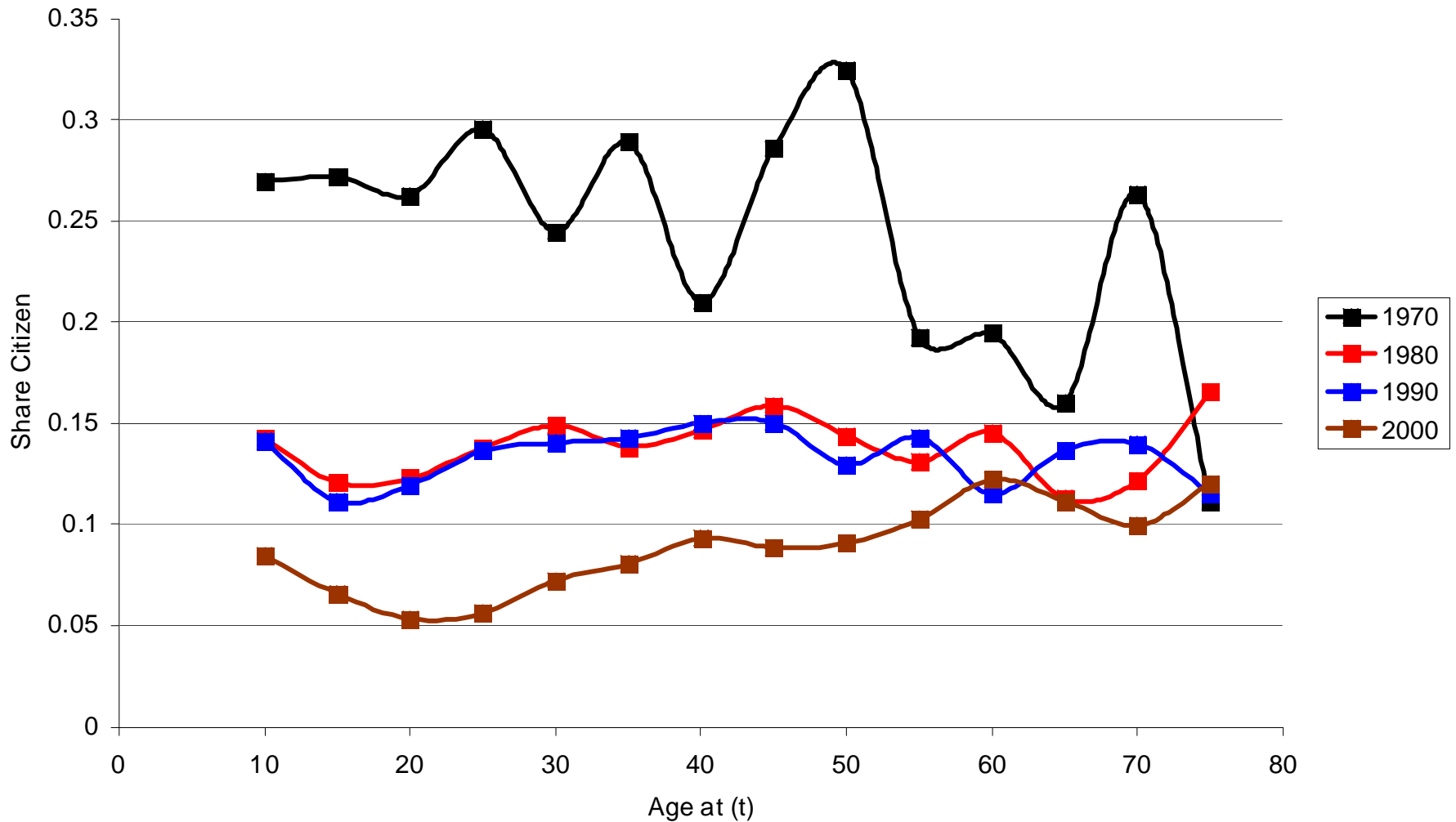


Figure 15. Changes in the Share of foreign-Born who are Citizen

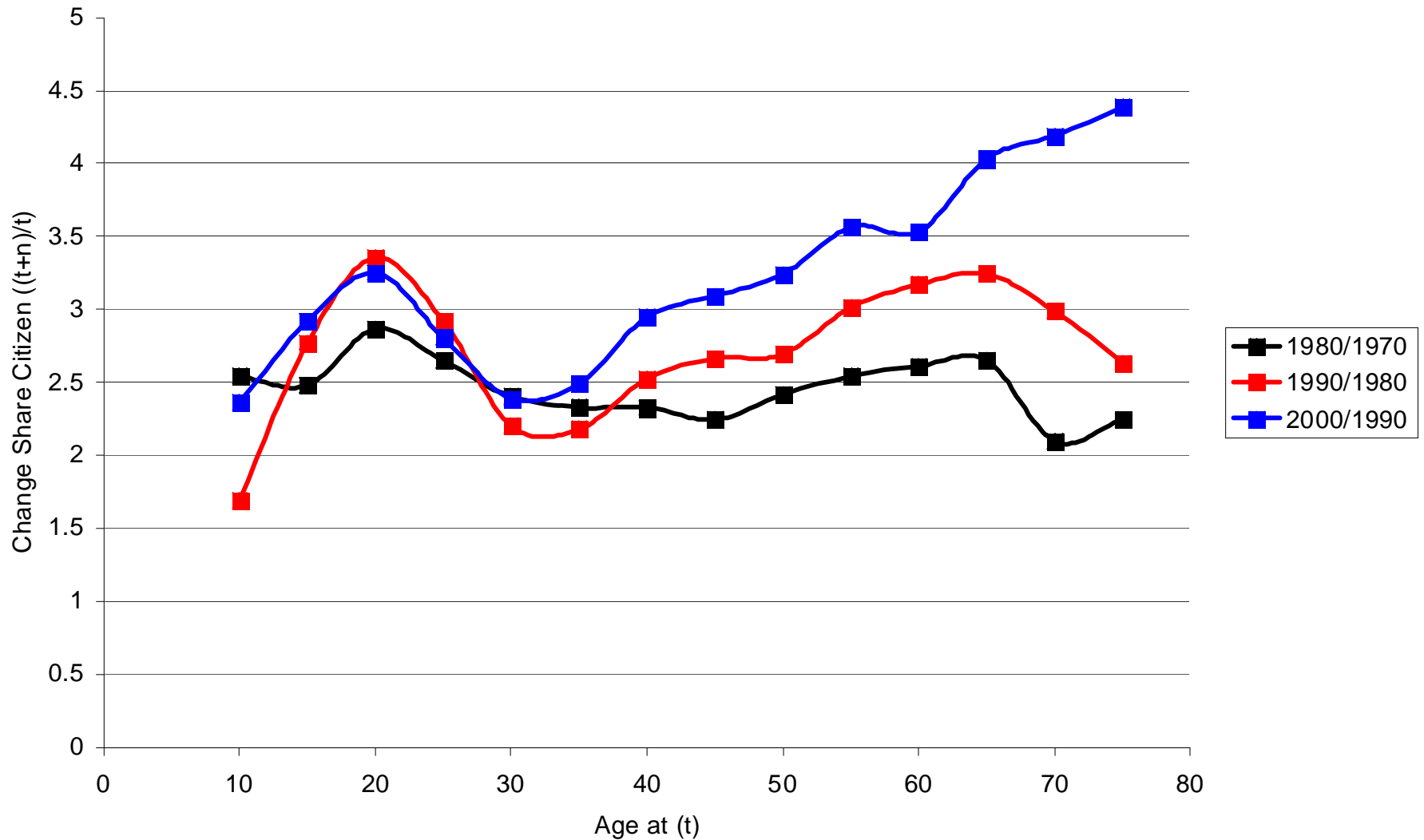


Figure 16. Changes in the Share of Mexican-Origin who are Citizen

